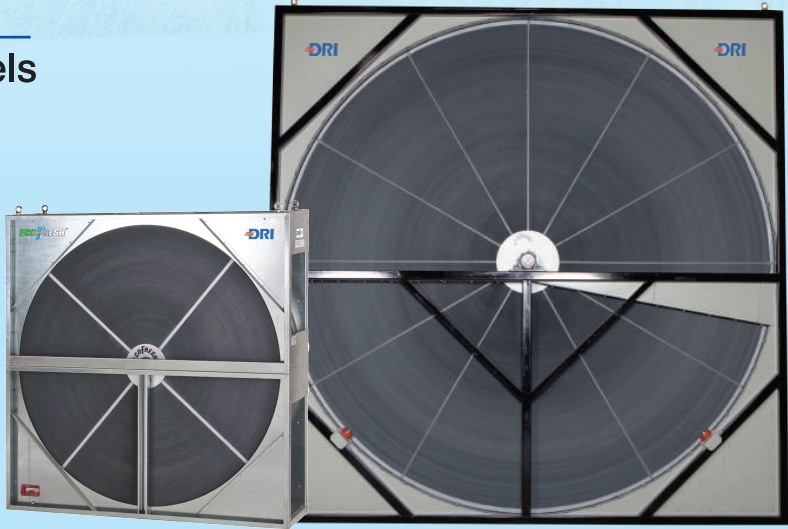


ALL WHEELS RECOVERY ENERGY SOME DO IT BETTER...

DRI[®] ECO FRESH[™]
Energy Recovery Wheels



EZ SERIES



Innovative Air Solutions

Sorption Wheels...EZ SERIES !!

State-of-the-art Test Facilities

Worldwide Memberships



High Selectivity :
EcoFresh Energy Wheels EZ series use special, Selective Zeolite Desiccant coated on aluminum substrate and this results in high latent recovery and control on cross contamination.

Aluminium Substrate :
The aluminium substrate eliminates any fire risks and results in high sensible recovery and high structural strength.

In-built purge sector eliminates cross contamination :
The Purge section provides strict separation of airflows, preventing carryover of bacteria, dust, and pollutants from exhaust air to supply air. Purge section and sealing system limit cross-contamination of the exhaust air concentration by volume.

Non Contact Labyrinth seal :

- ✓ No wear and tear.
- ✓ Effective sealing.
- ✓ Long life.
- ✓ Brush seal for wheels upto 2400 mm.

Structural Rigidity, Hardened Edges and Innovative Manufacturing Design :

- ✓ State-of-the-art winding technology and adhesives give EcoFresh rotors high structural strength.
- ✓ Wheel Edges hardened as standard to suit marine coastal application needs.

Highly Polished Surface :
Vertical run out less than 1 mm per 1000 mm resulting in extremely low leakage across the central divider seals.

Robust spoke Structure.

Highest Recovery Efficiency Ratio (RER) in the industry

Industry's highest recovery/performance :

- ✓ High Desiccant loading / coating
- ✓ Nearly equal sensible and latent recovery
- ✓ Higher performance, low pressure drops
- ✓ Laminar airflow due to thin aluminium substrate and uniform desiccant coating
- ✓ Superior airflow characteristics

Wide Range & Additional options :

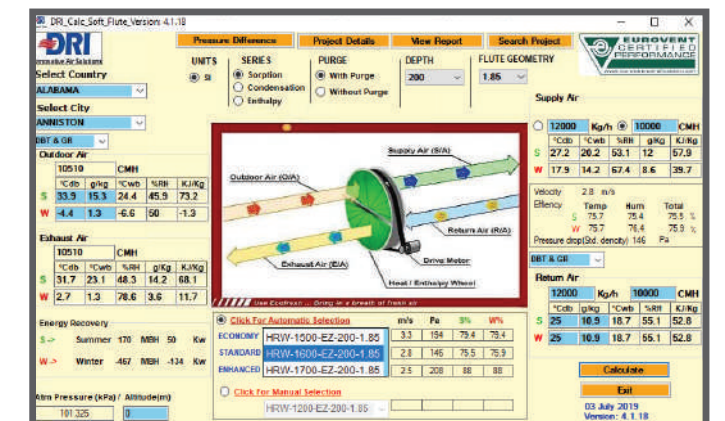
- ✓ Total energy recovery (Enthalpy) and Eurovent Certified sensible wheels.
- ✓ Customized Flute height and Rotor depth options.
- ✓ Cassette as well as Rotor options.
- ✓ Standard and Customized options.
- ✓ 500 mm to 5000 mm (dia.)
- ✓ Easy retrofit options.
- ✓ Segmented and Non Segmented options.
- ✓ Controls Package available.



Why DRI ?

- ✓ Largest global producer of Enthalpy Wheels
 - ✓ #1 in performance... worldwide
 - ✓ First choice of Engineers and Consultants globally
 - ✓ Eurovent Certified Wheels
 - ✓ Integrated Rotor manufacturing facility
 - ✓ World Class Rotor test facility
- (Enthalpy as well as Desiccant)

Selection Software Available



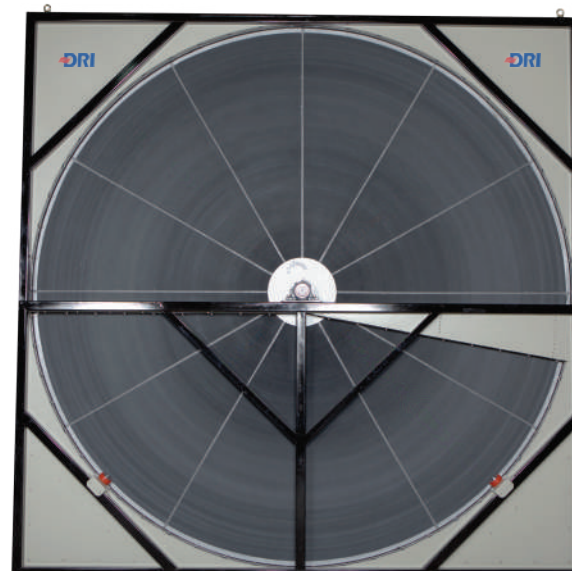
Fully Integrated Manufacturing Plant



EZ SERIES



Eurovent Certified



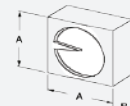
Heat Recovery Wheel - Performance Data HRW SERIES (EZ-200-1.85)



Velocity	M/S	1.0	1.5	2.0	2.5	3.0	3.5	4.0	4.5	5.0	Height and width "A" mm Inches	Depth in Flow Direction "B" mm Inches	Net Weight Kg. Pounds	
	FPM	200	300	400	500	600	700	800	900	1000				
Sensible		84.4	81.9	78.4	76.9	74.5	71.4	68.4	65.4	62.4				
Latent (Winter Heating)	Efficiency in %	85.4	82.9	79.4	77.9	75.4	72.4	69.4	66.4	63.4				
Latent (Summer Cooling)		84.4	81.9	78.4	76.9	74.4	71.4	68.4	65.4	62.4				
Total (Winter Heating)		84.7	82.2	78.7	77.2	74.8	71.7	68.7	65.7	62.7				
Total (Summer Cooling)		84.4	81.9	78.4	76.9	74.4	71.4	68.4	65.4	62.4				
Pressure Drop	Pa	59	75	99	128	162	182	205	228	251				
	in. w.c.	0.23	0.30	0.39	0.50	0.64	0.72	0.81	0.90	0.99				
Model Number		Air Volume												
HRW-500-EZ-200-1.85	CMH	319	479	639	799	958	1118	1278	1438	1597	700	295	57	
	CFM	188	282	376	470	564	658	752	846	940	27.6	11.6	126	
HRW-600-EZ-200-1.85	CMH	477	716	955	1194	1432	1671	1910	2149	2387	800	295	65	
	CFM	281	422	562	703	843	984	1124	1265	1405	31.5	11.6	143	
HRW-700-EZ-200-1.85	CMH	664	997	1329	1661	1993	2325	2656	2990	3322	850	295	70	
	CFM	391	587	782	978	1173	1369	1564	1760	1955	33.5	11.6	154	
HRW-800-EZ-200-1.85	CMH	880	1320	1760	2200	2640	3080	3519	3959	4399	950	295	79	
	CFM	518	777	1036	1295	1553	1812	2071	2330	2589	37.4	11.6	174	
HRW-900-EZ-200-1.85	CMH	1124	1686	2248	2810	3372	3934	4495	5057	5619	1030	295	88	
	CFM	661	992	1323	1654	1984	2315	2646	2976	3307	40.6	11.6	194	
HRW-1000-EZ-200-1.85	CMH	1397	2095	2794	3492	4190	4889	5587	6285	6984	1130	295	98	
	CFM	822	1233	1644	2055	2466	2877	3288	3699	4110	44.5	11.6	216	
HRW-1100-EZ-200-1.85	CMH	1699	2548	3397	4246	5095	5945	6794	7644	8493	1230	295	129	
	CFM	1000	1499	1999	2499	2999	3499	3998	4498	4998	48.4	11.6	284	
HRW-1200-EZ-200-1.85	CMH	2029	3043	4058	5072	6087	7101	8116	9130	10144	1330	295	150	
	CFM	1194	1791	2388	2985	3582	4179	4776	5373	5970	52.4	11.6	331	
HRW-1300-EZ-200-1.85	CMH	2323	3484	4646	5807	6969	8130	9291	10453	11614	1430	295	177	
	CFM	1367	2051	2734	3418	4101	4785	5468	6152	6835	56.3	11.6	390	
HRW-1400-EZ-200-1.85	CMH	2711	4066	5421	6777	8132	9487	10842	12198	13553	1530	295	193	
	CFM	1595	2393	3190	3988	4786	5583	6381	7178	7976	60.2	11.6	425	
HRW-1500-EZ-200-1.85	CMH	3127	4691	6255	7819	9382	10945	12509	14073	15636	1630	295	205	
	CFM	1840	2761	3681	4601	5521	6441	7362	8282	9202	64.2	11.6	452	
HRW-1600-EZ-200-1.85	CMH	3573	5359	7146	8932	10718	12505	14291	16078	17864	1730	325	237	
	CFM	2103	3154	4205	5257	6308	7359	8410	9462	10513	68.1	12.8	522	
HRW-1700-EZ-200-1.85	CMH	4047	6070	8093	10116	12140	14163	16186	18210	20233	1830	325	242	
	CFM	2381	3572	4763	5954	7144	8335	9526	10716	11907	72.0	12.8	533	
HRW-1800-EZ-200-1.85	CMH	4550	6824	9099	11374	13649	15923	18198	20473	22748	1930	325	271	
	CFM	2677	4016	5355	6694	8032	9371	10710	12048	13387	76.0	12.8	597	
HRW-1900-EZ-200-1.85	CMH	5081	7622	10162	12703	15243	17784	20324	22865	25405	2030	325	290	
	CFM	2990	4485	5980	7475	8971	10466	11961	13456	14951	79.9	12.8	639	
HRW-2000-EZ-200-1.85	CMH	5641	8462	11282	14103	16923	19744	22564	25385	28206	2130	325	332	
	CFM	3320	4980	6640	8300	9959	11619	13279	14939	16599	83.9	12.8	732	
HRW-2200-EZ-200-1.85 (MonoG)	CMH	6815	10222	13629	17037	20444	23851	27258	30666	34073	2201	325	386	
	CFM	4010	6016	8021	10026	12031	14036	16042	18047	20052	86.7	12.8	851	
HRW-2200-EZ-200-1.85 (H.M. & SEG)	CMH	6815	10222	13629	17037	20444	23851	27258	30666	34073	2400	460	634	
	CFM	4010	6016	8021	10026	12031	14036	16042	18047	20052	94.5	18.1	1397	
HRW-2400-EZ-200-1.85 (MonoG)	CMH	8136	12204	16272	20340	24408	28476	32544	36612	40680	2480	325	493	
	CFM	4788	7182	9576	11970	14364	16758	19152	21546	23940	97.6	12.8	1087	
HRW-2400-EZ-200-1.85 (H.M. & SEG)	CMH	8136	12204	16272	20340	24408	28476	32544	36612	40680	2600	460	717	
	CFM	4788	7182	9576	11970	14364	16758	19152	21546	23940	102.4	18.1	1580	
HRW-2600-EZ-200-1.85	CMH	9572	14359	19145	23931	28717	33504	38290	43076	47862	2800	460	787	
	CFM	5633	8450	11267	14084	16900	19717	22534	25350	28167	110.2	18.1	1735	
HRW-2800-EZ-200-1.85	CMH	11124	16686	22248	27810	33372	38934	44495	50057	55619	3000	460	857	
	CFM	6546	9820	13093	16366	19639	22912	26186	29459	32732	118.1	18.1	1889	
HRW-3000-EZ-200-1.85	CMH	12790	19185	25580	31975	38370	44766	51161	57556	63951	3200	460	929	
	CFM	7527	11291	15054	18818	22581	26345	30108	33872	37635	126.0	18.1	2048	
HRW-3200-EZ-200-1.85	CMH	14572	21857	29143	36429	43715	51001	58286	65572	72858	3400	514	1030	
	CFM	8575	12863	17151	21439	25726	30014	34302	38590	42877	133.9	20.2	2270	
HRW-3400-EZ-200-1.85	CMH	16468	24701	32935	41169	49403	57637	65871	74104	82338	3600	514	1092	
	CFM	9691	14537	19382	24228	29074	33919	38765	43610	48456	141.7	20.2	2407	
HRW-3600-EZ-200-1.85	CMH	18479	27718	36958	46197	55437	64676	73915	83155	92394	3800	514	1189	
	CFM	10875	16312	21750	27187	32624	38062	43499	48937	54374	149.6	20.2	2621	
HRW-3800-EZ-200-1.85	CMH	20605	30907	41210	51512	61815	72117	82420	92722	103025	4000	514	1399	
	CFM	12126	18189	24252	30315	36378	42441	48504	54567	60630	157.5	20.2	3083	
HRW-4000-EZ-200-1.85	CMH	22846	34268	45691	57114	68537	79959	91382	102805	114228	4200	514	1491	
	CFM	13445	20167	26889	33612	40334	47056	53778	60501	67223	165.4	20.2	3286	
HRW-4200-EZ-200-1.85	CMH	25201	37802	50403	63003	75604	88205	100805	113406	126007	4400	514	2485	
	CFM	14831	22247	29662	37078	44493	51909	59324	66740	74155	173.2	20.2	5477	
HRW-4400-EZ-200-1.85	CMH	27672	41509	55345	69181	83017	96853	110690	124526	138362	4600	514	2627	
	CFM	16285	24428	32570	40713	48856	56998	65141	73283	81426	181.1	20.2	5790	
HRW-4600-EZ-200-1.85	CMH	30258	45387	60516	75645	90774	105903	121032	136161	151290	4800	514	2772	
	CFM	17807	26710	35614	44517	53420	62324	71227	80131	89034	189.0	20.2	6109	
HRW-4800-EZ-200-1.85	CMH	32958	49438	65917	82396	98875	115354	131833	148313	164792	5000	514	2920	
	CFM	19396	29094	38792	48490	58188	67886	77584	87282	96980	196.9	20.2	6436	
HRW-5000-EZ-200-1.85	CMH	35774	53661	71548	89435	107322	125209	143096	160983	178870	5200	514	3053	
	CFM	21053	31580	42106	52633	63159	73686	84212	94739	105265	204.7	20.2	6729	

Note :

- (1) 2200mm diameter and above rotor are available with removable segmented media. Half moon cassettes complete with half moon rotors for containerisation and ease of shipping are available as options. Dimensions and weight shall vary in such cases.
- (2) Because of our policy of continuous product improvements, specifications are subject to change without notice.



Documents No. DRI-HRW-020-0
Date : June 24th, 2020

Page 2 of 2



DESICCANT ROTORS INTERNATIONAL Pvt. Ltd.

PAHWA GROUP
Innovation is life

DRI (INDIA):
100-101, Udyog Vihar, Phase-IV,
Gurgaon 122015, India
Phone: +91-124-4010189
E-mail: drimarketing@pahwa.com
Web: www.drirotors.com

DRI (KOREA)
107-503 Yeoksam E pyonhan
Sesang APT, Yeoksamdong
755-4 Kangnamgu Seoul Korea
(SeonReungro 69th street 20)
Tel. +82-10-8635-0851
E-Mail: drikorea@hanmail.net
Web: www.drikorea.co.kr

DRI (UAE)
P.O. Box No. 120672,
Q3-106, SAIF-Zone,
Sharjah, UAE
Tel: +971-6-5